

Ores in Magmatic Arcs - Indonesia

8 – 22 March 2025

2 week field trip starting in Jakarta, ending in Bima



CODES, Centre for Ore Deposit and Earth Sciences, University of Tasmania

CRICOS Provider Code 00586B

With the growing importance of the western Pacific region for mineral exploration, mining and ore forming processes there is a pressing need for relevant training on research and exploration skills applicable to ores formed in magmatic arc environments.

*Previously, comprehensive field-based training in this subject area was only available in the USA. To address the need for similar training in a west Pacific context, focussing on the specific geological, tectonic and environmental characteristics of this region, CODES is proud to offer an intensive two-week field-based unit, **Ores in Magmatic Arcs - Indonesia**.*

This training has a strong focus on field observations and hands-on practical skills, supported by an understanding of theoretical aspects. The full spectrum of deposits (e.g., porphyry, high sulfidation, low sulfidation) developed in magmatic arc settings will be covered. The presenters have detailed knowledge of the areas and deposits visited, and are uniquely equipped to deliver the skills and insights needed by participants.

Trip fees include all accommodation and ground transport, entry fees (Mt Ijen), course notes, field guide, and breakfasts and lunches. Travel to and from Indonesia, as well as internal Indonesian flights, dinners and alcohol, are not included in the trip fee and are the responsibility of each participant. Participants are responsible for checking and complying with entry requirements for Indonesia (more information can be found here: <https://www.imigrasi.go.id>)

PRESENTERS

David Cooke is Director of CODES, and Professor of Hydrothermal Geochemistry. He has extensive research expertise in hydrothermal fluid chemistry and ore-forming systems, specialising in porphyry and epithermal deposits.

Adi Maryono is currently VP Exploration at J Resources with over 30 years experience in Au-Cu exploration with BHP, Newmont, Intrepid Mines, Buena, and J Resources. He was part of the discovery teams at Reko Diq in Pakistan, Elang and Tujuh Bukit/Tumpangpitu in Indonesia, and several smaller gold deposits in Indonesia and Australia. Adi is also a senior adjunct researcher at CODES, University of Tasmania Australia (UTAS), and regularly leads field trips in Indonesia for SEG, IAGI-MGEL, and CODES-UTAS.

Lejun Zhang is a senior lecturer at CODES and Earth Sciences, at the University of Tasmania. His research is focused on characterising the geochemical footprints of large porphyry and epithermal systems and the processes that control element dispersion. He specializes in developing and applying SWIR, whole-rock and alteration mineral chemistry data for enhancing exploration in lithocap environments.

Iryanto Rompo is a field-based geologist with over 20 years experience in exploration of epithermal Au-Ag, porphyry Cu-Au, VHMS and skarn deposits. He has worked as an exploration geologist, exploration manager and consultant geologist in Indonesia, Malaysia and Australia. His experience includes over seven years exploring in the lithocap environment on the island of Lombok, Indonesia.

TRAVEL, ACCOMMODATION AND CLOTHING

A detailed trip itinerary and accommodation details are provided separately. Land-based travel (including the sea plane or ferry to Batu Hijau), accommodation and some meals are covered by the trip fee. **Travel to and from Indonesia, as well as internal Indonesian flights, are not included in the trip fee and are the responsibility of each participant.**

Appropriate field clothing (hard hats, safety glasses, field boots or steel-capped boots and wet weather gear) are essential. Participants should be prepared for full-day hikes.

REGISTRATION FEE INCLUSIONS

- *Accommodation March 7th—21st inclusive (Student rate includes shared accommodation. Where available, students may elect to pay extra for a single room)*
- *Ground transport (including seaplane or ferry to/from Batu Hijau)*
- *Entry fees (Mt Ijen)*
- *Course notes and field guide*
- *Breakfasts, lunches and some group dinners*

EXCLUSIONS

- *Travel to and from Indonesia (e.g. international flights, accommodation in transit, visa fees etc.)*
- *Internal flights within Indonesia*
- *Most dinners*
- *Alcohol*

Ores in Magmatic Arcs is offered as a unit in the national Minerals Geoscience Masters program.

MASTER OF ECONOMIC GEOLOGY

THE MOST COMPREHENSIVE MASTER DEGREE IN MINERAL EXPLORATION AND MINING GEOLOGY ANYWHERE IN THE WORLD

This course work-based Masters program is aimed at geoscientists who want to gain a thorough up-date on advances across the spectrum of economic geology applied to mineral exploration. The Master of Economic Geology at UTAS is part of the national Minerals Geoscience Masters program, jointly offered by the University of Tasmania and the University of Western Australia, in conjunction with Curtin Business School at Curtin University.

Course structure

The Masters course can be completed in either of two ways:

Option 1 (research pathway): requires the completion of six coursework units (worth 75% of total credit points) and a minor research thesis (worth 25%). Five of the units must be completed at CODES including thesis units KEA724 and KEA725, core units KEA712, KEA716 and at least one field-based unit, while the remainder may be completed at other participating universities. Duration: 18–24 months full-time; up to 36 months part-time (flexible in recognition of industry participants).

Option 2 (professional pathway): requires the completion of eight units of coursework, at least five of which must be undertaken at CODES including core units KEA712, KEA716 and

at least one field-based unit. Duration: up to 36 months part-time (but flexible in recognition of constraints on industry participants).

Participating universities offer up to seven units annually or in rotation over a two-year period. Most units are of two weeks duration.

Fees

UTAS tuition fees are approximately \$2,237 per unit (8 in total) for domestic students (2024 rate for Commonwealth Supported Places) and \$9,313(AUD) per unit for full-fee paying overseas students (FFPOS) (2024 rate). Field-based units have additional costs. Costs will vary for units taught by other MGM partner institutions.

Entry Requirements

A BSc (Hons), or a BSc (majoring in geoscience) with at least two years industry experience. International students should also refer to <http://www.international.utas.edu.au>. English language proficiency requirements also apply.

Masters units offered by CODES

- 28 October – 2 November & 18–22 November 2024:
KEA710 Exploration in Brownfield Terrains *
- 8 – 22 March 2025:
KEA707 Ores in Magmatic Arcs (Indonesia) ^
- April – May 2025:
KEA716 Fundamentals of Economic Geology *
- June – July 2025:
KEA709 Ore Deposit Geochemistry, Hydrology and Geochronology #
- August–October 2025 (Intensive Part 2: September):
KEA713 Geodata Analytics *
- October 2025:
KEA711 Geometallurgy ^
- October – November 2025:
KEA707 Ores in Magmatic Arcs (South America) ^
- February 2026:
KEA718 Advanced Field Skills in Economic Geology ^
- March 2026:
KEA708 Volcanology and Mineralisation in Volcanic Terrains (New Zealand, western Tasmania) ^
- April – May 2026:
KEA716 Fundamentals of Economic Geology *
- June – July 2026:
KEA712 Ore Deposit Models and Exploration Strategies #

* *online delivery*

blended delivery (week 1 face to face/online; week 2 online)

^ *face to face delivery*

For further information contact:

Dr Robert Scott &/or CODES Info
Masters Coordinator, CODES
Private Bag 79, Hobart 7001, Australia

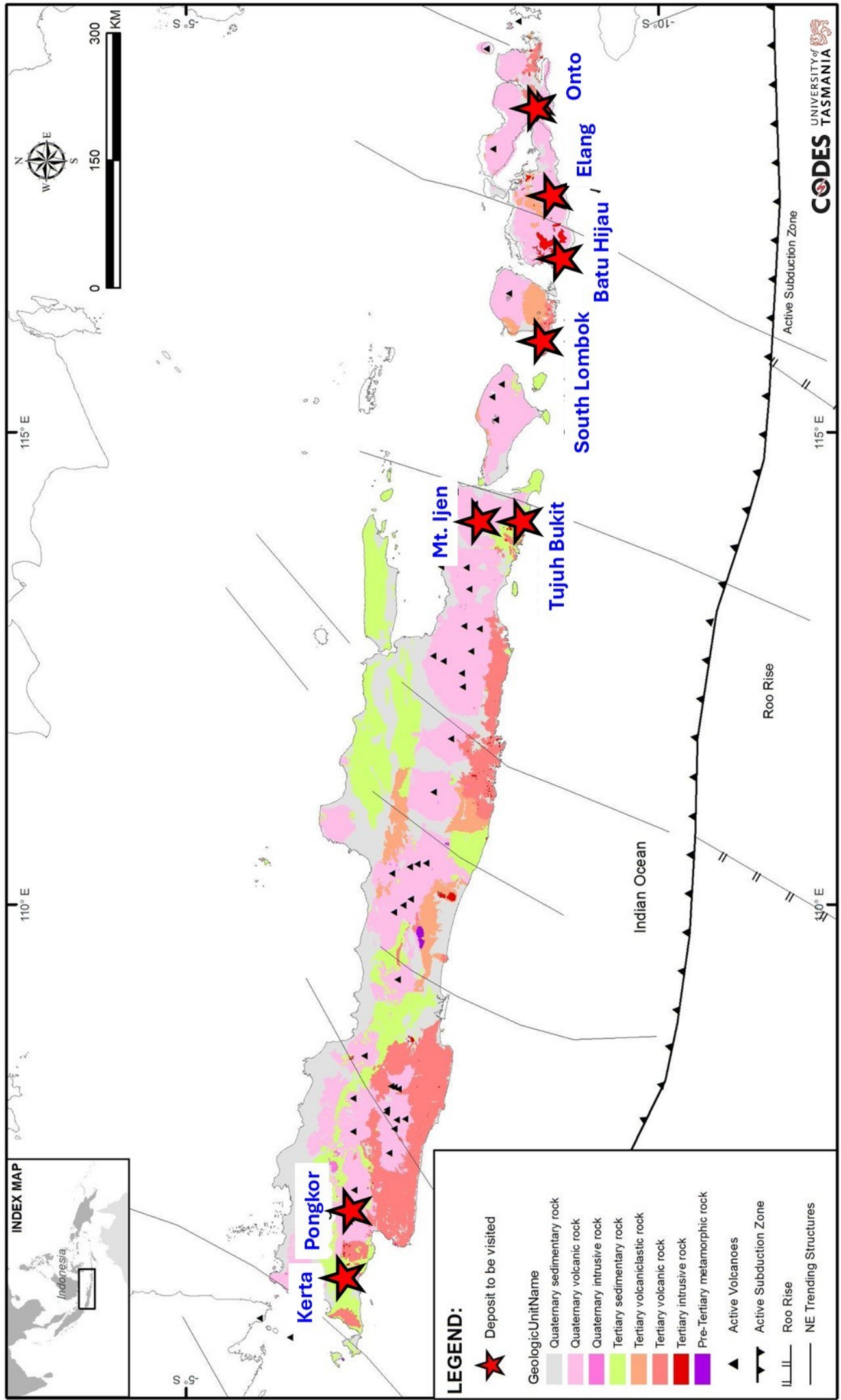
Tel: +61 3 6226 2786

Email: CODES.Info@utas.edu.au

Robert.Scott@utas.edu.au

Web: utas.edu.au/codes/masters-short-courses

Geology and ore deposits of the East Sunda Arc, Indonesia



REGISTRATION FORM

Ores in Magmatic Arcs

8—22 March 2025

Please complete and return to:

CODES

University of Tasmania, Private Bag 79

Hobart, Tasmania, Australia 7001

Ph: +61 3 6226 2472

Email: CODES.Info@utas.edu.au

PERSONAL DETAILS

Title—Please highlight (Prof / Dr / Mr / Mrs / Ms / Miss)

First Name: Last Name: (surname / family name):

Preferred Name (for use on name tag):

Position:

Company / University:

Address:

City: State: Postcode: Country:

Email: Phone (mobile / cell):

Dietary requirements / allergies / other health issues:

Emergency contact (name and email/phone contact):

Passport (Nationality/number/expiry):

REGISTRATION FEES

All fees are in Australia dollars (AUD). Please indicate

MGM Masters Students:

Total registration fee \$4,600 (Excludes airfares and UTAS tuition fee)

Deposit (GST free): \$1,600

Balance (GST free): \$3,000

Industry Participants:

Total course fee \$9,000 (Excludes airfares)

Deposit (GST free): \$4,000

Balance (GST free): \$5,000

Other Students (if places remain):

Total course fee \$4,600 (Excludes airfares)

Deposit (GST free): \$1,600

Balance (GST free): \$3,000

NB. Preference will be given to enrolled MGM students, with limited Industry places available. Other student places only where places remain after MGM and Industry places are allocated.

Deposits are fully refundable prior to the end of January 2025. \$250 cancellation fee up until February 16th, increasing to \$500 thereafter.

Please retain a copy of this form for your records and email or post original to CODES (contact details above).

PAYMENT

Registrations are due by **6th of January, 2025**. Deposit payments are due on the **19th of January, 2025 (please note: payments cannot be received until 2025)**.

Full payment must be received by **16th of February, 2025**.

Preferred payment method. Please indicate

Credit Card

Upon receipt of your registration form you will be provided with a payment reference number and web address for online payments (the payment portal will provide you with a tax invoice/receipt upon payment). Please note: Credit card details cannot be accepted by email.

Invoice (payment can be made by credit card or bank transfer)

Invoice to (name/company):

Attention to (optional):

Reference (e.g. order number (optional)):

Address:

Email address:

MGM STUDENTS: THIS FORM DOES NOT CONSTITUTE AN OFFICIAL UNIVERSITY ENROLMENT—YOU MUST ALSO ENROL VIA ESTUDENT BY THE INTERNAL DEADLINE (this may differ from the date above)